



A

B

C

D

E

F

G

H

I

J

K

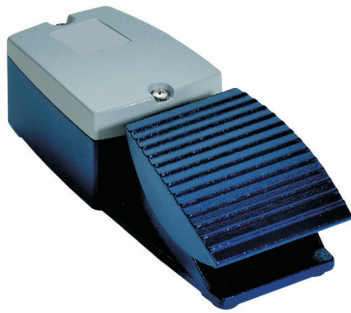
L

# Foot Switch/Remote, Hand Remote

<b>Foot Switch single/double</b>	<b>I-2</b>
<b>Hand Remote</b>	<b>I-3</b>
<b>Price List</b>	<b>I-4</b>

A  
B  
C  
D  
E  
F  
G  
H  
I  
J  
K  
L

## Foot Switch single/double



Dia. I - 2

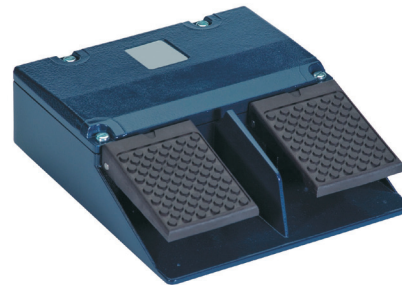
**Foot switch single**

The single foot switch is suitable for switching on/off welding positioners and drive units.

The connecting cable is 3 m long and is fitted with plugs.

Weight: 0.9 kg

**Foot switch single, 3m cable  
part no. 019.0.2900**



Dia. I - 3

**Foot switch double**

The double foot switch is suitable for switching on/off and switching welding positioners and reversing the direction of rotation on turntables.

The connecting cable is 3 m long and is fitted with plugs.

Weight: 1.2 kg

**Foot switch double, 3m cable  
part no. 019.0.2901**



Dia. I - 1

**Foot Remote Controller**

The foot remote controller is suitable for switching on/off as well as controlling the speed of welding positioners, drive units or for current control of TIG and Plasma power sources.

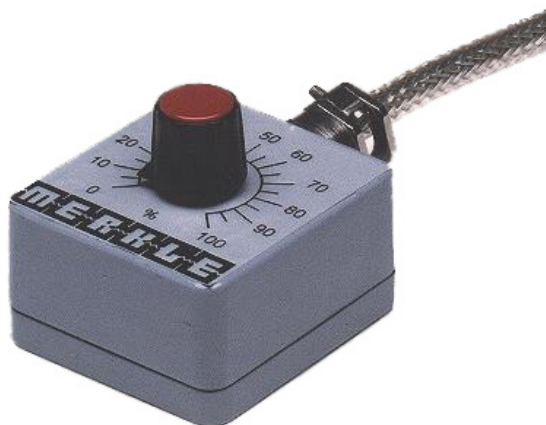
The connecting cable is 5m or 8 m long.

The controller potentiometer has a resistance of 10 k  $\Omega$ .

Weight: 2.2 kg

**Foot Remote Controller, 5 m cable  
Article no. 019.0.3000**

**Foot Remote Controller, 8 m cable  
part no. 019.0.2999**



Dia. I - 4

**Manual Remote Controller**

The manual remote controller is intended for speed control of welding positioners, drive units. The cable is 4 m or 8 m long.

The controller potentiometer has a resistance of 10 k  $\Omega$ .

Weight: approximately 1.5 kg

**Manual Remote Controller, 4 m cable  
part no. 013.01059**
**Manual Remote Controller, 8 m cable  
part no. 013.01060**


Dia. I - 5

**Manual Remote Controller**

The manual remote controller is intended for the TIG- Welding Units and MMA/Stick Electrode Welding Units.

In the case bottom a magnetic holder is integrated for rapid attachment of the controller.

With a tilt switch the polarity can be switched (only MobiARC 282 cel $\pm$ ).

The connection cable is standard 5 m long and can be plugged.

weight: 2,5 kg

**Manual Remote Controller 5 m cable with plug  
Art.Nr. 123.791**
**Extension to 1 m cable  
Art.Nr. 117.540**