

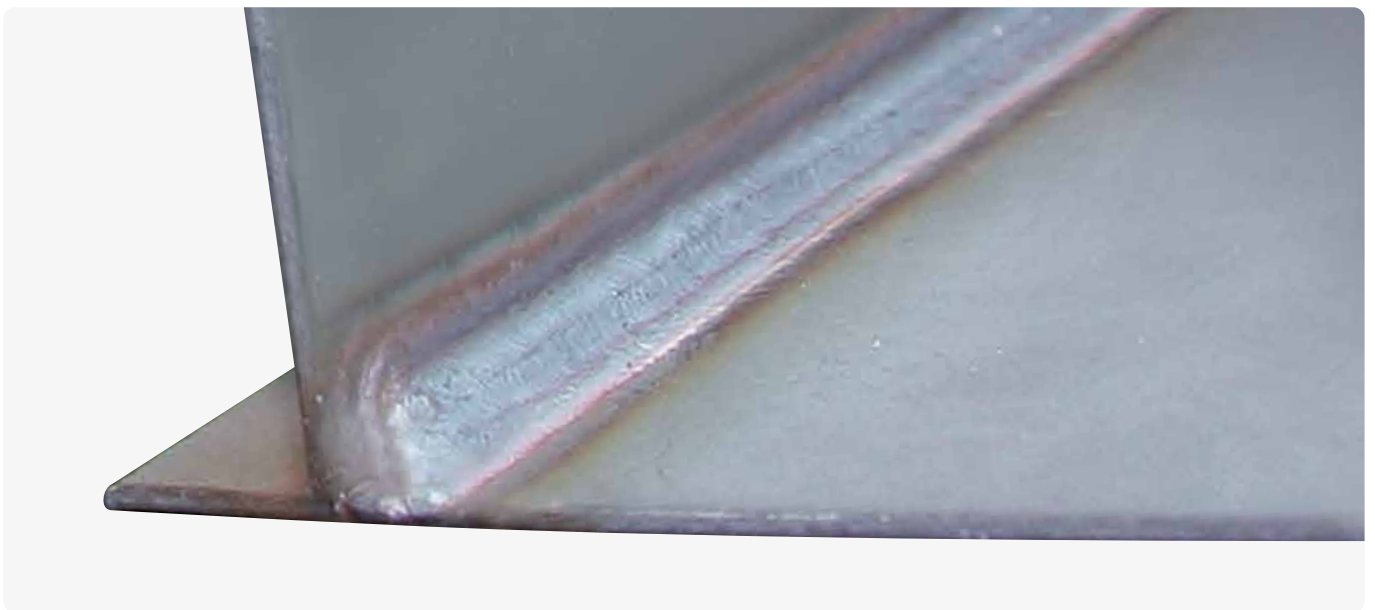


ColdMIG

30 % LESS HEAT INPUT

100 % GAP BRIDGING

100 % PERFECT FOR MIG BRAZING





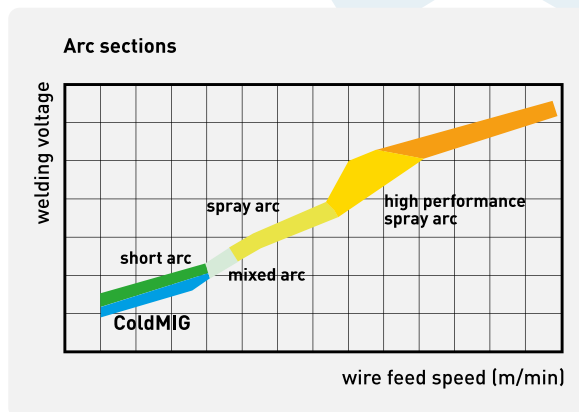
ColdMIG-Process

UP TO 30 % REDUCED HEAT INPUT!

The MERKLE ColdMIG process sets new standards in welding. With as much as 30 % less heat input thin metal sheet welding (0.6–3.0 mm) is achieved to perfection. Its high gap bridging capability and optimum welding facility of mixed materials and coated sheet metals are other world class features.

The characteristic curve is controlled in the up- and downslope cycle by an ultrafast digital signal processor. The ColdMIG process is available for all series HighPULSE, SpeedMIG and MobiMIG.

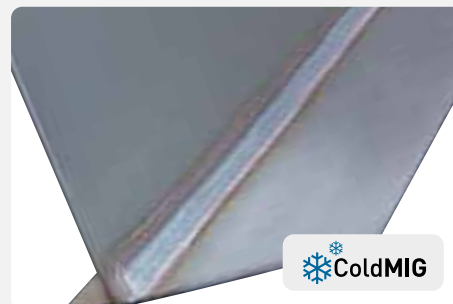
MERKLE ColdMIG.
Welding in perfection.



1

30 % LESS HEAT INPUT

- Perfect results for welding of thin metal sheets (0.6–3.0 mm)
- Steep controlled upslope in the short-circuit cycle
- Steep (almost vertical) downslope of the current after drop transfer



2

100 % GAP BRIDGING CAPABILITY

- High gap bridging capability for excellent results
- New standards even with complex requirements and applications



3

100 % PERFECT FOR MIG BRAZING

- MIG brazing of galvanised sheet metals thanks to less heat input
- Joining of mixed materials

